

COMPARISON OF GOTHIC SETTING IN TELEVISION SERIES *WEDNESDAY* (2022) AND *THE CHILLING ADVENTURES OF SABRINA* (2018)

Syifa Aulia Khairunnisa^{1,*}, Pepi Siti Paturohmah², & R. Myrna Nur Sakinah³

^{1,2,3} Universitas Islam Negeri Sunan Gunung Djati Bandung
Pos-el: syfanisa17@gmail.com¹, pepisitipaturohmah@uinsgd.ac.id²,
myrnaasakinah@gmail.com³

ABSTRACT

This research's objective is to find the comparison of two television series, *Wednesday* (2022) and *The Chilling Adventures of Sabrina* (2018) of their setting in Gothic element using the theory of Fred Botting. Based on Botting's theory, the setting in Gothic fiction was divided into two types, natural sublime and synthetic sublime. This research answered the question of what Gothic's setting in the television series *Wednesday* (2022) and *The Chilling Adventure of Sabrina* (2018) and the comparison between the two television series regarding the Gothic's setting. This research's objective requires a deep understanding of the topic, so the qualitative descriptive method is applied in this research. Based on this reseach, it was found that there are nine Gothic setting in *Wednesday* (2022) and six in *The Chilling Adventures of Sabrina* (2018). On that note, four similarities and seven differences was also found regarding the Gothic setting between the two television series. Based on the analysis, *Wednesday* (2022) has more Gothic setting compared to *The Chilling Adventures of Sabrina* (2018) both in natural and synthetic sublime, with with one more data on natural sublime and four more data on synthetic sublime.

Keywords: Comparison, Difference, Gothic, Similarities, Television Series.

ABSTRAK

Penelitian ini bertujuan untuk mengetahui perbandingan dua serial televisi, *Wednesday* (2022) dan *The Chilling Adventures of Sabrina* (2018) yang berlatarkan unsur Gotik dengan menggunakan teori Fred Botting. Berdasarkan teori Botting, latar dalam fiksi Gotik dibagi menjadi dua jenis, yaitu natural sublime atau sublim alami dan synthetic sublime atau sublim sintetik. Penelitian ini menjawab pertanyaan tentang setting Gotik dalam serial televisi *Wednesday* (2022) dan *The Chilling Adventure of Sabrina* (2018) serta perbandingan kedua serial televisi tersebut terkait setting Gotik. Tujuan penelitian ini membutuhkan pemahaman yang mendalam tentang topik tersebut, sehingga metode deskriptif kualitatif diterapkan dalam penelitian ini. Berdasarkan penelitian ini, ditemukan sembilan setting Gotik pada *Wednesday* (2022) dan enam dalam *The Chilling Adventures of*

Sabrina (2018). Ditemukan juga empat persamaan dan tujuh perbedaan mengenai setting Gotik antara kedua serial televisi tersebut. Berdasarkan penelitian ini, *Wednesday* (2022) memiliki lebih banyak setting Gotik dibanding dengan *The Chilling Adventures of Sabrina* (2018), baik pada natural sublime maupun synthetic sublime, dengan satu data lebih banyak di natural sublime dan empat data lebih banyak di synthetic sublime.

Kata Kunci: Gotik, Perbandingan, Perbedaan, Persamaan, Serial Televisi.

A. INTRODUCTION

Television series *Wednesday* (2022), released in late november of 2022, *Wednesday* (2022) has become one of the successful and iconic shows especially in today's generation. It has become one of the pop culture phenomena among young adults that also has collected a staggering six billion minutes worth of views according to Nielsen record. One thing that was plain to see from the television series *Wednesday* (2022) was its gothic aesthetic.

The main character of this show itself, Wednesday Addams, as the main focus of this show has been a goth icon for many decades thanks to its long history back in the era of its original franchise from its first ever television adaption in 1964 up until 1998. Themes like death, macabre and eternal romance is what gothic is all about. Not to mention, the usage of dark and bold makeup and all-black wardrobe, as well as the application of conspicuous finery and decoration. The aforementioned aspects were plain to see in Netflix's *Wednesday* (2022) with its execution of dark and dreary elements throughout the series.

Aside from that, the television series *The Chilling Adventures of Sabrina* (2018) was also one of the succesful shows by Netflix. For the record, according to news written by Stephanie Prange in Media Play News, *The Chilling Adventures of Sabrina* (2018) was able to rank first in the Show on the Rise with a rise ration of 97% and first on the Top Binge Show by 4.86% in share of binges. *The Chilling Adventures of Sabrina* (2018) has the same gothic elements just like *Wednesday* (2022). This show was a darker spin of its sitcom series in 1996. Centered around the character Sabrina Spellman, who was revealed as a half witch and half human teenager, the series heavily influenced with dark elements such as witchery, supranatural and puritan aesthetic which is a gothic generic footing.

According to Clery in Hogle (2002:21) the first ever work of literature that was released bearing a title of a gothic story was an imitation of a medieval tale by Horace Walpole long after the Middle ages. Additionally, when referring to this specific genre, the historian of literature of terror frequently ascertains Walpole as the forefather from 1920 and beyond. Walpole then conscientiously designed several rules for what he stated as a new category of romance. If he happened to not put together those rules, the novel would be brushed off as a work with bizarre capriciousness that did not hold any significance. According to him, this novel was an endeavor to combine two different types of widely

known romance categories, ancient and modern. Later on, this novel continues as the future prototype contributor for supernatural terror in fictions, including films. The strong and vivid emotions exuded by the characters in such a genre, in the middle of an unnatural and extraordinary, strange phenomenon or an event are able to connect the reader to perceive and identify the sense of terror even further

However, the craze that was started by Walpole only got to be put in use occasionally beyond the next several decades in the category of fictional narrative such as prose or novels and drama theatrics. It was not until the 1790s, this genre gained popularity and became the next trend. So much it became a contentious subject mode of literature. Especially with the release of another iconic and unforgettable piece of literature that was inherently ‘gothic’ that was written by Mary Shelley. Aside from in the novel, the ingredient of gothic was also be used in plays, operas, short stories or supernatural tales section in newspapers and magazines. It also became the buzzworthy subject among women and a more educated class.

At this time, this genre became the fundamental aspect of the re-emergence of a ripened, fully developed gothic novel, poem and painting. In this point in time, was the essential time for gothic as the terms and style of gothic considerably become rather mainstream especially with the publication of that was considered as gothics classic in the early twentieth century. Gothic literature history broadened its reach to film, television shows and series, satirical plays both musical and nonmusical, games and music videos accessed by computer, and even an experiment of serious fiction injected with elements of Gothic.

Gothic elements are the formula that made up a fiction to be called Gothic. According to Clery in Hogle (2002:25), among those elements are the revival of old-fashion culture, the aesthetic of the sublime and original genius, and the expanding band Shakesporean tragedy. There are many elements that made up Gothic, but one element that stood out that marked Gothic is the setting. Based on Clery in Hogle (2002:21), the convention of gothic writing portrayed the setting in the medieval era combined with superstitious elements. That being said, that is precisely why this series was focused on the comparison of Gothic setting in the two television series, *Wednesday* (2022) and *The Chilling Adventures of Sabrina* (2018).

B. THEORETICAL FRAMEWORK

The setting of gothic fiction usually follows the same patterns. According to Pykett (2005:195), these kinds of fiction “share a penchant for mysterious, archaic settings, which included isolated and possibly haunted castles, dungeons, or sublime landscapes”. In a sense of setting Fred Botting states that:

“The major locus of Gothic plots, the castle, was gloomily predominant in early Gothic fiction. Decaying, bleak and full of hidden passageways, the castle was linked

to other medieval edifices—abbeys, churches and graveyards especially— that, in their generally ruinous states, harked back to a feudal past associated with barbarity, superstition and fear.” (1996:2-3)

In the first most attempts of making the Gothic, the setting of a castle was used over and over again, with occasional hidden passageways, churches and graveyards. Of course, all of those setting will not be complete without the decay and bleak atmosphere that gives off the feeling of fear and dread. As the Gothic continues to shift and develop, the setting of the castle eventually eases off to an old building or mansion where fears and anxieties of the past residents, such as family, come to the present time in which the subject is currently at.

According to Botting (1996: 25-26) the setting can be categorize into two type, natural sublime and synthetic sublime. Sublime generally associated with grandiosity and opulence. It awaken the emotion such as terror and wonder as an effect of it grandeur. Botting (1996: 25) stated that the leading piece of natural sublime is a mountain. A mountain, with its irregularity and wide scale was able to awaken the sense of terror, fear and wonder. The natural sublime, called as it was, as a result of its nature. It was made from the nature itself and not made made. On the other hand, synthetic sublime is the opposite of natural, as it was made by human or as a result of human intervention. Gothic architecture is the prime example of synthetic sublime according to Hugh Blaire in Botting (1996:26). The height, size, paraphernalia and irregularity of gothic architecture gives off the feeling of grandeur.

That being said, those stock setting that was stated by Pykett and Botting was categorized into two type, natural sublime and synthetic sublime. The setting that was not man-made was categorized into natural sublime, and the setting that was man-made was categorized into synthetic sublime. The setting in *Wednesday* (2022) and *The Chilling Adventures of Sabrina* (2018) also has been categorized into natural and synthetic sublime.

C. RESEARCH METHOD

Qualitative method is the type of method that was used in this study. According to Creswell (2018:51), the approach to investigate and comprehend the meaning of a certain individual or group as the source of an issue, whether it's a social or human issue. The qualitative research method collects information through the use of words, symbols, drawings, and observations. Afterwards, the other objection in this study is to find the similarities and differences in the subjects of research. This is where the comparative literature methods come into play. The method of comparative literature works by comparing the distinctions to capture the likeness of two literature or more, not limited to a certain form of literature. Study of cultures that coincide with each other in terms of literary works and interdiscipline boundaries, concentrated on the comparison of specific areas is what comparative literature is all about. In his book of *Pegangan Penelitian Sastra Bandingan*, Damono (2009:1) explained that comparative literature is an approach in literature that

cannot produce its own theory. It might have to be mentioned that in research that focuses on comparative literature, any preexisting theory can be used to compare a literature in accordance with its objective and purpose of the said study.

Data source is the origin which the information and data to be used in the study. Based on Sugiyono (2012: 225) two types of data sources used in research are called primary data sources and secondary data sources. Primary data are the original data that comes from the effort of the researcher themselves in gathering the data. Primary data are pure in nature as no performance has been conducted on it. In this research, the writer chose two television series *Wednesday* (2022) and *The Chilling Adventures of Sabrina* (2018) as two of the many primary data. Since *The Chilling Adventures of Sabrina* (2018) has four season, to make it even, the data chosen for this research are only form each first season of the two television series.

The television series *Wednesday* (2022) has a total of eight episodes on its first season, while *The Chilling Adventures of Sabrina* (2018) has a total of ten plus one episodes on it's first season. Technically, it has a total of eleven episodod. Even so, it has to be kept in mind that the eleventh episode in the first season of *The Chilling Adventures of Sabrina* (2018) is not to be included as a part of the data source. The reason that it was not to be included was because, it is a special episode made solely for Christmas Day. That specific episode is not really relevant and in tune with the previous episodes in that season. Not to mention the fact that the eleventh episode did not come until December 14th whereas the rest of the episodes was released on the October 26th. With that in mind, the data from *The Chilling Adventures of Sabrina* (2018) was only be taken from one to ten episodes of the first season and not eleven episodes. *Wednesday* (2002) can be watched in the link <https://www.netflix.com/id-en/title/80223989> while *The Chilling Adventures of Sabrina* (2018) can be watched in the link <https://www.netflix.com/id-en/title/81231974>.

On one hand, secondary data sources are the sources of research data obtained by researchers indirectly through intermediary media. This kind of data commonly originated from someone else that conducted similar research in this field of study. Secondary data generally obtained from literacy books, historical records or reports that have been compiled in archives (documentary data) published or unpublished, obtained from books, journals, theses and several websites that are used as supporting data in research. For this study, one of the secondary data sources are the script of the first episodes of both series as they are the only script available that was handed out to the public. Those scripts can be found via download the link: <https://thescriptlab.com/property/wednesday/> for *Wednesday* (2022) and <https://thescriptlab.com/property/the-chilling-adventures-of-sabrina/> for *The Chilling Adventures of Sabrina* (2018). These scripts will help in pointing out the elements of gothic utilized in both series.

There are many types of methods in which researchers can collect the data needed for their research. Ary (2002: 430) maintains that observation, interviewing, and document analysis are the types of methods that can be used in collecting data of a research. Among many ways of obtaining the data, observation is the most suited for this research. Observation is a general form in collecting data. The act of observation, to put it simply, is for the researcher to watch the nature and activity conducted by the subject of the research. It is also imperative for the researcher to document, note, or record (depending on requirements) what was being observed to be used for further analysis.

The thing that was being observed are the context of both series, the action, dialogue and expression of the characters in both series. In analyzing the data, the theory of gothic elements given by Fred Botting have become the basic of the theory. The gothic element's setting is divided into two types: natural sublime and synthetic sublime. The data collected that concern about setting was identified on those two types. After that, those data from each television series has been compared and found the similarities and differences between the two.

D. RESULT AND DISCUSSION

1. Gothic Setting in *Wednesday* (2022)

According to Birkets (1993: 53-53), setting is the place and time an action or event took place. In the series *Wednesday* (2022), there are a total of 9 data in setting including 2 data of natural sublime and 7 data of sythetic sublime.

Table 1 Setting of *Wednesday* (2022)

Datum	Excerpt	Episode	Category
1	SHERIFF GALPIN: All right, issue a warning. Keep hikers out of the woods . Don't approve any more campfire permits for the foreseeable future. (17:28)	1	Natural Sublime, Woods
2	WEDNESDAY: It would enslave him to you. That was scary at first, so you used the cave and the shackles. But eventually he willingly became your servant. And when Kinbott came close to discovering the truth, you had Tyler kill her and pin it on Xavier. (19:37)	8	Natural Sublime, Cavern
3	Nighshade Library - Nevermore Academy - Night	1	Synthetic Sublime, Hidden Passageway

	Rowan stands before a giant floor-to-ceiling bookcase filled with dozens of identical purple leather-bound volumes. (p, 43) (40:29)		
4	SANTIAGO: Sir, we got a situation. Eugene Ottinger's mom just called, frantic. Something's going on at Nevermore . (26:48)	8	Synthetic Sublime, Castle
5	ENID: What about Wednesday? Tyler and Thornhill took her? Where? Crackstone's crypt , what the heck? (22:03)	8	Synthetic Sublime, Crypt
6	WEDNESDAY: You know the original pilgrim meeting house, the one from the 1600s? You know if it's still around? TYLER: What's left is out in Cobham Woods, but it's pretty much a ruin . (22:10)	3	Synthetic Sublime, Ruins
7	MORTICIA: This reminds me of when you got your first grave-digging kit. You were so happy you nearly smiled. WEDNESDAY: Are you sure you don't want to join? MORTICIA: Uhm...No, That's okay, darling. I won't spoil your fun. (34:53)	5	Synthetic Sublime, Graveyard
8	SANTIAGO: First time someone's killed themselves in the morgue . Guys don't know what to do with the body. GALPIN: What do you got? SANTIAGO: Gun was legal and registered in his name. Colt .45. (15:37)	5	Synthetic Sublime, Morgue
9	WEDNESDAY: I saw him coming out of the Gates mansion. GALPIN: The Gates mansion . What the hell were you doing there? WEDNESDAY: House hunting. (22:43)	6	Synthetic Sublime, Mansion

a. Natural Sublime

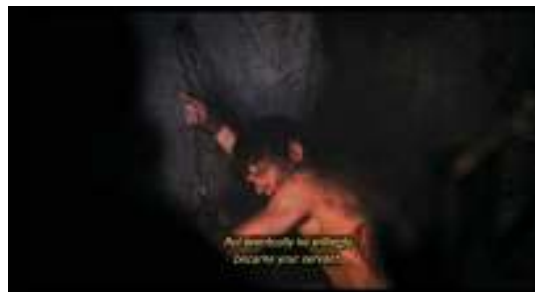
There are two setting that was identified as the natural sublime, the woods and the cavern. Filled with sparsely populated, thin-sized towering trees, the area around the woods somehow always looked foggy and cloudy as stated in the script of *Wednesday* (2022:56). Giving the whole place a gloom and eerie glow, even in the day. The monumental and expansive size of the woods gives off the sense of an infinite possibilities beyond the mind of human perception. It triggers an unreasonable sense of fear and terror to those who step inside it. This made the woods a natural sublime. The Woods that was located around

Nevermore Academy is one of the most frequently used places for strange and mysterious events in this series, such as the death of the hiker and Rowan, Eugene's attack, as well as the Tyler and Enid's battle. **Picture datum number 1** is the scene where the local police discovered the hiker's dead body.



Picture datum no. 1

Made what looked like a huge and coarse-textures boulder, the cave in **picture datum number 2** was rather diminutive in size compared to a more enormous cavern in general based on Eugene and Wednesday's dialogue in episode 8 in minutes 19:00. That being said, from outside, the cave that was used as another setting in this series looked like it was drilled carefully by machine. But that is not the truth. The surface of the entrance looked smooth despite the undisputable textures. Even so, the narrow and jagged tunnel tells the cave was definitely natural and not man-made. That made the cave a natural sublime. This cave is one of the spots used in the series that contribute the unmistakable feeling of dread such as the scene where Wednesday and Eugene investigated the cave and when Laurel tortured Tyler.



Picture datum no.2

b. Synthetic Sublime

There are seven setting that are identified as synthetic sublime including hidden passageway, castle, crypt, ruins, graveyard, morgue, and mansion. The hidden passageways in this series are located somewhere near the cloister of the Nevermore academy based on the script of *Wednesday* (2022:43). With the marble statue of Edgar Allan Poe that concealed the entrance of the hidden passageway, one had to snap their fingers twice to trigger the

statue to slide away and allow them to head down the stairs leading down to the Nightshade Society's library. In **picture datum number 3**, Rowan went through the hidden passageway to find a hidden library and retrieve something from on of the book.



Picture datum no.3

Nevermore Academy's castle can be described as nothing more than the pinnacle of Gothic architecture based on the script of *Wednesday* (2022:7) with its pointed arches, stained-glass windows, flying buttresses, ribbed vaults, spires, clock towers and gargoyles. The dark material of the building's foundation also gives the feel of the unmistakable grandeur of Gothic. Stone walls and Wooden floor, large circular window that resembles a spider's web leading to a balcony of Wednesday's room in Ophelia Hall is a part of this magnificent castle. The **picture datum number 4** was the scene mentioning Wednesday facing Crackstone in the Nevermore academy.



Picture data no.4

The crypt resembles a small building made of stone with two large winged statues adorning the entrance. The name Joseph Crackstone is engraved at the middle top of the grotto based on the scene in episode 2 at 36:01 minutes . The moss and wild plants that grew around both the statue and the crypt suggest the idea of how long that place has been built and abandoned. This place is the witness of scenes such as Wednesday meeting with Goody and Crackstone's resurrection. **Picture datum number 5** was the scene when Enid finds out Wednesday was taken to the crypt.



Picture datum no.5

The ruins of the original meeting house in Cobham woods are barely there. Destroyed planks and pillars, creaky gates, burned walls, bare ceilings, complete with scattered remains of trash here and there. According to Tyler in episode 3 at minutes 22:22 the ruin is filled with homeless and addicts. This place is the witness of the scene when Goody was persecuted, Wednesday investigation, and the bearded man's death. In the **picture datum number 6**, Tyler told Wednesday the location of the ruins.



Picture datum no.6

The graveyard is located on the left of the city of Jericho's plaza where a melted bronze statue of Crackstone was placed. The graveyard was surrounded by a black colored iron gates. The sparse population of maple trees gives the graveyard a bit of a color. But it didn't help that much, since the leaves had fallen from the tree, making the tree look a little bit dead. **Picture datum number 7** was the scene where Wednesday dug Garrett's grave to determine his cause of death.



Picture datum no.7

The morgue in this series was in a building of Jericho's coroner and medical examination center. From the previous chapter, it was shown that the homeless man was attacked by the monster in the ruins of Cobham woods. This morgue is the place where Wednesday's investigation of the monster's victim and the place where a suicide happened. In **picture datum number 8**, the local police is investigating the morgue where a suicide took place.



Picture datum no.8

The abandoned mansion of Gates family is a two story building with cream colored stonewalls and arched windows. Surrounded by a tall iron gate, the building's evidence of being abandoned was supported with the shrubs and plantations that was grown wildly. This place is the place where the killer put away the evidences of her killing, such as the car that ran into Mayor Walker and the missing body parts of the monster's victims. In **picture datum number 9**, Galpin questioned Wednesday of where she had been right after Mayor Walker's attempted murder.



Picture datum no.9

2. Gothic Setting in *The Chilling Adventures of Sabrina* (2018)

According to Birkets (1993: 53-53), setting is the physical place and certain time an event or act happened. In the television series *The Chilling Adventures of Sabrina* (2018), there are a total of 6 data in setting including 1 data of natural sublime and 5 data of sythetic sublime.

Table 2 Setting of *The Chilling Adventures of Sabrina* (2018)

Datum	Excerpt	Episode	Category
10	BLACKWOOD: We are gathered here together, in these woods , in the presence of our Dark Lord. With all souls, the living and the dead, of our coven: The Most Unholy Church of Night. (42:33)	2	Natural Sublime, Woods
11	HARVEY: And I, like an idiot, decided to go hide in the mines . And I'm in there, alone. Half an hour goes by, and then an hour, and no one finds me. And I'm trying to get back to the mine entrance. And then I saw it, Sabrina. (24:40)	3	Synthetic Sublime, Mines
12	SABRINA: What's going on, Aunt Hilda? HILDA: So, you need to come to the Church of Night straight away. Father Blackwood has called an emergency meeting. SABRINA: During the day? HILDA: Hm-mm. Bit of a crisis, so if you could meet me there. So sorry. (21:08)	10	Synthetic Sublime, Church
13	AMBROSE: Then what are you and your friends doing in our Cain Pit ? SABRINA: The rite demanded that someone be killed so that Tommy would come back. Agatha was that someone. But, the ritual didn't mention anything about the murdered sacrifice having to stay dead. (43:53)	8	Synthetic Sublime, Graveyard
14	HILDA: (<i>Phone rings</i>) Spellman Sisters Mortuary , how may I assist you? Oh, no. ZELDA: Yes, Hilda, what is it? HILDA: A young man has just been stabbed. His mother and father are coming to see us. Poor, poor dears. (24:34)	1	Synthetic Sublime, Morgue
15	BATIBAT: You're his family, aren't you? My captor's kin. You smell like Spellmans. ZELDA: Know this, demon. Our house is sealed with an incantation we, and only we, know. If you harm us, you'll never escape it. (05:26)	5	Synthetic Sublime, Mansion

a. Natural Sublime

Home to many familiar, a goblin creatures that take the form of animals to serve their witch masters, the Greendale woods is an expansive landscape filled with tall trees, vines, and other natural plantations. That made the woods a natural sublime. Based on the script of *The Chilling Adventure of Sabrina* (2017:13), the woods is occasionally engulfed by thick

mist around the area, this landscape is used in many scenes in this series such as Sabrina's Dark Baptism, the resurrection of Tommy, and Sabrina's signing of the Book of the Beast. In **picture datum number 10**, Sabrina's Dark Baptism is being held.



Picture datum no.10

b. Synthetic Sublime

In this series, the Kinkle's family mines are one of the settings used to show some creepy and disturbing scene. In **picture datum number 11**, Harvey told Sabrina the story of his as an eight year old getting lost in the mines when playing hide and seek. The mine was shown as very massive and dark. To the point someone could easily get lost in it as in the scene of episode 3 at 24:50 minutes. The mines was built by Kinjle family and that made it a synthetic sublime. Not to mention the deafening silence and the eerie atmosphere around it, make the scene almost disturbing.



Picture datum no.11

The Church of the Night, the coven witches where Sabrina and her family is a part of, is also the place where a trial is held to judge Sabrina's alleged wrongdoing at the Dark Baptism based on the scene in episode 3 at 16:16 minutes. The church as it was a building made by a person, is a synthetic sublime. The Feast of Feast, a ritual where a witch is chosen to become a sacrifice and eaten by the the rest of the coven also used the setting of church. In **picture datum number 12**, Hilda is astral projecting to Sabrina's place to inform her about the coven meeting that was about to be held in the Church of the Night.



Picture datum no.12

The graveyard in the front of Spellman’s residence that has been with them for generations reputedly has soil that was collected from Cain's pit according to Hilda in episode 8 at 15:33 minutes. Making it the most fertile soil on earth. That made it a synthetic sublime. After Agatha’s murder of Tommy's prior resurrection, Sabrina and the others are planning to bury Agatha in Spellman’s graveyard that supposedly has the ability to bring witches from the dead. In **picture datum number 13**, Ambrose is confronting Sabrina for conducting a resurrection ritual.



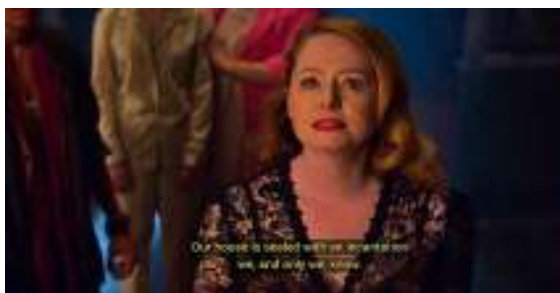
Picture datum no.13

Sabrina’s aunts, Zelda and Hilda Spellman, are the owner of Spellman’s Sisters Mortuary, a private mortuary in Greendale that offers the service of funerals, burials and such things. Mortuary or the morgue is a funeral home for a dead body to be stored for a post mortem, gracious burial or other types of funerals such as cremation. Ambrose, Sabrina’s cousin is the mortician in this business who handled the cadaver directly. In **picture datum number 14**, Hilda was taking a phone call from a customer. Turned out, the adopted son of Kemper family was found dead, stabbed to death. That being said, the code SAS stands for Sabrina, setting, and synthetic sublime.



Picture datum no.14

Spellman’s mansion style building is an old Victorian mansion. It has multiple stories, with seven gables and a porch surrounding it that is the classic of this kind of architecture. In **picture datum number 15**, Zelda confronted a demon that was loose after Sabrina successfully opens the Acheron configuration that was tasked to her as a test. Turns out, it was a sleep demon that was trapped by Edward Spellman for the past 70 years. They though all this time Edward was not serious about having insomnia. That proven wrong now. And the reason was at the very front of their eyes. This demon comes out and brings a nightmare to the Spellman family members. On that note, the code SAS stands for for Sabrina, setting, and synthetic sublime.



Picture datum no.15

3. Comparison of Gothic Setting

a. Similarities in *Wednesday* (2022) and *The Chilling Adventures of Sabrina* (2018)

Among many data regarding Gothic setting that was found in television series *Wednesday* (2022) and *The Chilling Adventures of Sabrina* (2018), there are four similarities found. Those similarities can be seen in table 3 below.

Table 3 Similarities of *Wednesday* (2022) and *The Chilling Adventure of Sabrina* (2018)

Category	<i>Wednesday</i> (2022)	Datum	<i>The Chilling Adventure of Sabrina</i> (2018)	Datum
Natural sublime	Woods	1	Woods	10
Synthetic sublime	Graveyard	7	Graveyard	13
	Morgue	8	Morgue	14
	Mansion	9	Mansion	15

The **first similarity** in both series is in the usage of woods as the place where several events took place. Woods is a part of natural sublime. In *Wednesday* (2022) and *The Chilling Adventures of Sabrina* (2018), the woods are always shown to be in a eternal state of foggy and misty, the weather are somewhat cloudy in the day while at night it was a complete darkness that gives a bone chilling atmosphere. In **datum 1**, a dead body was founded in the

woods by Sheriff Galpin and his subordinates. On one hand, in **datum 10**, the member of the church gathered in the woods to witness Sabrina's Dark Baptism. It was clear enough that there was similarities in between those two, that is the place where both events took place; the woods.

Second similarities is the usage of graveyard. Graveyard is a synthetic sublime, as it was something that not naturally build by nature but by humans. The graveyard in *Wednesday* (2022) is a public property, meanwhile in *The Chilling Adventures of Sabrina* (2018) the graveyard was owned by the Spellman family where every family member of that family was buried there. But that is not vital point. The point is, both series has events that took place in the graveyard. In **datum 7**, Wednesday and Morticia went to the graveyard and dug Garrett's grave to find out about the truth of his death. That being said, in **datum 13**, Sabrina and her friends buried Agatha in her family graveyard to bring her back from the dead. Those data proves that the usage of graveyard is indeed one of the similarities in both series.

Third similarities is the usage of morgue or a mortuary. Morgue is a synthetic sublime. There is no way the nature made a morgue, it has to be made by human. The morgue in *Wednesday* (2022) refers to Jericho's coroner and medical examination center. In **datum 8** after getting a call from his subordinate, Sheriff Galpin hurried to the crime scene. The crime scene turned out to be the said morgue. A coroner of that morgue was found dead, shot himself with a gun after writing a suicide note. Meanwhile, in *The Chilling Adventures of Sabrina* (2018), the morgue is the Spellman Sisters Mortuary. In **datum 14** after picking up a call from a customer, meaning a family of a person who just died, Hilda told Zelda about it and showed empathy for the said family. It was undeniable that both series has a similarity in using morgue as setting in their stories.

Next in the **fourth similarities** is the usage of mansion. Just like the graveyard, mansion is not built by nature, so it was classified as a synthetic sublime. The mansion in *Wednesday* (2022) is the old and abandoned mansion of the Gates family. While in *The Chilling Adventures of Sabrina* (2018), the mansion is Sabrina's own house, that she inhabited with her two aunts, Zelda and Hilda, and her cousin Ambrose. In **datum 9** Wednesday went to the Gates mansion to discover the mysteries of the killing in Jericho, only to find out Mayor Walker beat her to it. Meanwhile, in **datum 15**, Sabrina and her aunts along with her cousin faced againts a sleep demon called Batibat in their mansion. Similarly as above, it was undeniable that some events happened to have taken place in mansion of those series.

Differences in *Wednesday* (2022) and *The Chilling Adventures of Sabrina* (2018)

Among many data regarding Gothic setting that was found in television series *Wednesday* (2022) and *The Chilling Adventures of Sabrina* (2018), there are seven differences found. Those differences can be seen in table 4 below.

Table 4 Differences of *Wednesday* (2022) and *The Chilling Adventure of Sabrina* (2018)

Category	<i>Wednesday</i> (2022)	Datum	<i>The Chilling Adventure of Sabrina</i> (2018)	Datum
Natural Sublime	Cavern	2	-	-
Synthetic Sublime	Hidden Passageway	3	-	-
	Castle	4	-	-
	Crypt	5	-	-
	Ruins	6	-	-
	-	-	Mines	11
	-	-	Church	12

The **first difference** in both television series is in the usage of a cave. Cavern is categorized as natural sublime. In *Wednesday* (2022), cavern was used as a setting several times. In **datum 2** Wednesday confronted Thornhill about her real identity as Laurel Gates and the mastermind behind the murders in Jericho. Wednesday also accused her behind the manipulation of Tyler. Before that, Wednesday and Eugene went to the the cave located deep inside the woods only to find animal bones, handcuff, and a monster claw. Based on that she concluded that Laurel is the one who enslaved Tyler in that cave, tortured him, and drugged him. Turned out, Wednesday accusation are not baseless and is the truth. The cave that was used in this series is not the kind of cave that was tampered by human, it was built naturally. The same cannot be said in *The Chilling Adventure of Sabrina* (2018). There is no such a thing as cave in that series. The closest thing is most likely to be the mines. But a mines is not natural sublime, it is synthetic.

Moving on to the **second difference** is the usage of hidden passageway in the series. Hidden passageway is categorized as synthetic sublime. In *Wednesday* (2022), hidden passageway was used as a setting several times. In **datum 3** the hidden passageway was the path leading to a secret underground library. That library was actually a base for a secret society called the Nightshade Society. The passageway was located near a cloister of the Nevermore academy. Rowan, who was a student in Nevermore academy went to the secret library after succesfully completed the hidden mechanic. There he ripped a page from a book which later the audience found out it was a drawing his mother made ages ago. This hidden passageway however cannot be found in *The Chilling Adventure of Sabrina* (2018). There

was not even anything that was remotely similar to it. There was only a building that was curtained by a spell to made it looked like a normal building, which is far from a hidden passageway.

Next is the **third difference** in the setting of a castle. A castle is also classified as synthetic sublime. The castle in *Wednesday* (2022), refers to the Nevermore academy's castle. In **datum 4** when Wednesday faced against a newly resurrected Crackstone, the quad of Nevermore came into view. The quad is a part of the architecture of the castle. Nevermore academy has a very distinct architecture of Gothic with its iconic pointed arches, gargoyle statues, glass stained windows and many more. Other events that happen in this setting include Wednesday's near death with the gargoyle statue, Thing's attack in Ophelia Hall, and the incident at Rave'n dance. That being said, *The Chilling Adventure of Sabrina* (2018) did not have a castle as a setting in its series. That series did have old building and mansion but not castle, much less Gothic castle unlike *Wednesday* (2022).

The **fourth difference** between the two series is the usage of a crypt as a setting. A crypt is also a synthetic sublime. In *Wednesday* (2022), the owner of the crypt is the founding father of Jericho, Joseph Crackstone. In **datum 5** after Wednesday and Principal Weems faced Laurel at the greenhouse, Wednesday was taken after being unconscious by Laurel to the Crackstone's crypt. A crypt is a chamber that contained a coffin. Aside from that, the event include the crypt as a setting such as the discovery of a writing on the crypt's wall and the Crackstone resurrection by Laurel. The scene where Wednesday, Enid and the other student was competing in a Poe Cup Champion is also include the crypt. One of the goal was to take a flag from the crypt and bring it back across the river. However, *The Chilling Adventure of Sabrina* (2018) did not have such a thing as a crypt. That series only have a private mortuary, embalming room, and graveyard but not a crypt such as *Wednesday* (2022).

Fifth difference is featuring the ruins. A ruins is generally described as a rundown, almost completely destroyed building. In *Wednesday* (2022), the ruins is used to be a meeting house before it was burned to the ground by Crackstone and his followers. In **datum 6** after Wednesday found out the meeting house in Pilgrim World was just a mere counterfeit, Wednesday went to Tyler to asked him whether he knows about the original meeting house or not. Fortunately for her, he was quite knowledgeable about it. After getting some direction from Tyler, Wednesday went to the meeting house that turned out to nothing more than a ruins. In that ruins, Wednesday got herself a vision caused by her power about the event leading to the burning of the meeting house. That said, *The Chilling Adventure of Sabrina* (2018) did not have ruins as one of its setting. That series did have an old building but not to the extent of a ruin. That is why those series differs in this part of Gothic element.

Next is the **sixth difference** of the two series that include the setting of a mines. Different from cave that was built by nature, mines is the ones that was modified by human, usually to dig out minerals and other things. Therefore, mines is a synthetic sublime. The

mines in *The Chilling Adventure of Sabrina* (2018) was owned by the family of Kinkle. In **datum 11** after Harvey's argument with his dad regarding he should work at the mines, Harvey told Sabrina about his experience at the mines that made him so reluctant to work at his family mines. He told Sabrina that when he was just a little boy, he played hide and seek with his brother. As a child, he was unaware of the danger of playing in the mines, so he went there to hide. However, after hours not being found, he then saw a monster with a goat that traumatized him up until now. That being said, *Wednesday* (2022) did not include mines as one of its setting. The closest thing it have is a cave, but a cave is a natural sublime. That where it differs with *The Chilling Adventure of Sabrina* (2018).

Moving on to the **seventh difference** is about the setting of church. The church is also a synthetic sublime. The church in *The Chilling Adventure of Sabrina* (2018) refers to the Church of the Night which was the church that was Sabrina and her family a member of. The Church of the Night is a witch coven that worships the Dark Lord. In **datum 12** when Sabrina and Harvey was having a conversation in the Baxter High library, Sabrina's aunt Hilda astral projected there to tell Sabrina about the meeting that was about to happen in the Church of the Night. Aside from that, the event of Sabrina's trial and the Feast of Feast also included the Church of the Night as the setting. However, it cannot be said with *Wednesday* (2022). That series did not include a church as a setting. There was not even a setting that resembled it. This is where it was also differs about the two series.

E. CONCLUSION

Gothic fiction has a certain formula in it that made said works a Gothic. That formula is called Gothic elements. After thorough research, there many kinds of Gothic elements. However, this research is focused on the Gothic setting. In Gothic fiction, according to Botting (1996: 25-26) setting is divided into natural sublime and synthetic sublime. *Wednesday* (2022) has woods and cavern as natural sublime with hidden passageway, castle, crypt, ruins, graveyard, morgue and mansion as synthetic sublime. Meanwhile, *The Chilling Adventures of Sabrina* (2018), has woods as natural sublime with mines, church, graveyard, morgue, and mansion as synthetic sublime. Both television series has similarities with the usage of woods, graveyard, morgue and mansion and differences in the rest of the Gothic setting.

DAFTAR PUSTAKA

Ary, Donald. (2002). Introduction to Research in Education. Sixth Edition. New York: Thomson learning.

Botting, Fred. (1996). *Gothic*. London: Routledge.

Clery, Emma. (2002). The genesis of “Gothic” fiction. In, Hogle, Jerrold E. (ed.) *The Cambridge Companion to Gothic Fiction*. New York: Cambridge University Press, pp. 21-39.

Creswell, J.W., & Creswell, J.D. (2018). *Research Design* (5th ed.). Los Angeles: SAGE Publications.

Damono, Sapardi Djoko. (2009). *Pegangan Penelitian Sastra Bandingan*. Ciputat: Editum

Hogle, E. Jerrold. (2002). *The Cambridge Companion to Gothic Fiction*. New York: Cambridge University Press.

Pykett, Lyn. (2005). “Sensation and the Fantastic in the Victorian Novel.” *The Cambridge Companion to the Victorian Novel*. Ed. Deirdre David. Cambridge: Cambridge University Press.

Sugiyono. (2012). *Metode Penelitian Kuantitatif, Kualitatif, dan R&D*. Bandung: Alfabeta.